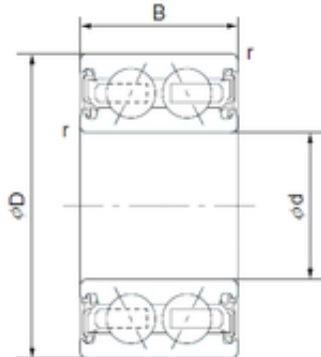




BEARING PRECISION AXLE CORP.

35 mm x 50 mm x 20 mm SNR ACB35X50X20
Angular contact ball bearings



Bearing No. ACB35X50X20

Size	35x50x20 mm
Bore Diameter	35 mm
Outer Diameter	50 mm
Width	20 mm
d	35 mm
D	50 mm
B	20 mm
C	20 mm

ACB35X50X20 Bearing 2D drawings and 3D CAD models